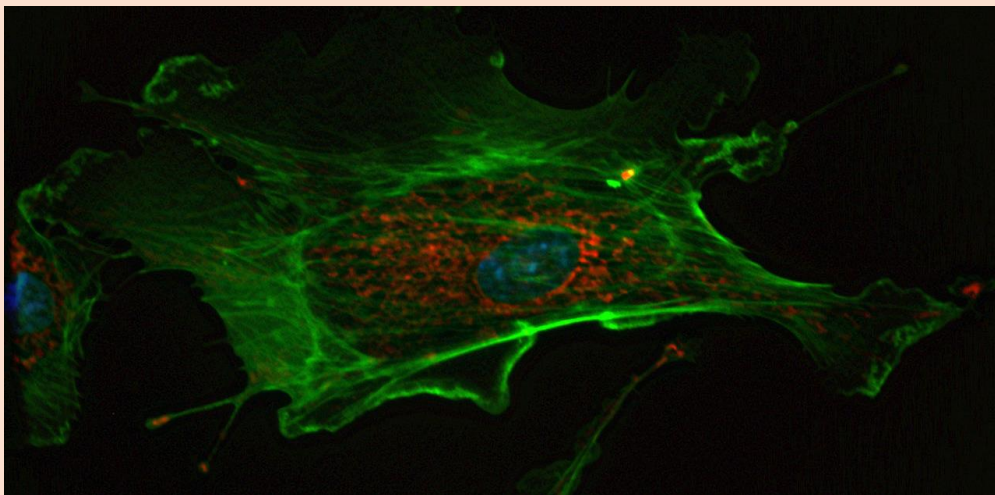


# PhD Program in the Discipline of Biosciences and Biomedical Engineering (BSBE), IIT Indore



The [Discipline of Biosciences and Biomedical Engineering \(BSBE\)](http://bsbe.iiti.ac.in) at IIT Indore invites applications from highly motivated and research-oriented students for admission to its PhD Program for the Autumn Semester of AY 2018-2019 as per the below-mentioned categories of admission. Candidates are strongly advised to visit the profiles of the faculty members at <http://bsbe.iiti.ac.in/faculty.php> before applying for the PhD program.

**Categories of Admission:** Kindly refer to the main PhD advertisement available at <http://academic.iiti.ac.in/phdadvt.php>.

## Application Procedure

### Indian Students (Last date of online application: April 30, 2018):

- Candidates must apply ONLINE through our website (<http://academic.iiti.ac.in:8080/nregistration.jsp>). This will generate a unique application number for each applicant.
- **Application Fee:** 100/- Indian Rupees to be paid through State Bank Collect ([Click here](#) for Payment).
- After Submitting the application online, the eligible candidate has to send the signed hard-copy of the application mentioning Statement of Purpose (SOP) along with State Bank Collect receipt, recent photograph, Self-attested relevant Certificates, (for SW candidates: No Objection Certificate, Experience Certificate, last 3 months salary slip and Employer's PAN card) to the DPGC convener of BSBE within 10 days from the last date of submission of online application.
- In case a candidate wishes to apply in more than one discipline then separate application must be filled for each discipline.
- The shortlisted candidates must arrange recommendation letters from at least two referees well before appearing for the interview. **Candidates should request the referees to send recommendation letters to [admission-bsbe@iiti.ac.in](mailto:admission-bsbe@iiti.ac.in) or provide in a sealed envelope.**

## RESEARCH AREAS



Innate Immunity & Inflammation

Macrophage Biology

Computational Molecular Biophysics

Molecular Recognitions

Epigenetic Regulations

Host-Pathogen Interactions

Chemical Biology

Metabolomics & Proteomics

Bio-orthogonal Probe Development

Biosensors

Drug Delivery

Biomaterials

Diagnostics

## **International Students (Last date of online application: May 31, 2018):**

Anyone who is not a citizen of India will be considered as an international candidate for the purpose of admission.

- Candidates must apply ONLINE through our website (<http://academic.iiti.ac.in:8080/nregistration.jsp>). This will generate a unique application number for each applicant.
- No application fee is payable by the International students for 2018-Autumn Semester.
- After Submitting the application online, the eligible candidate has to send the signed hard-copy of the application mentioning Statement of Purpose (SOP) along with recent photograph, Self- attested relevant Certificates in support of academic qualifications, experience and citizenship (copy of valid passport) etc. to the DPGC convener of BSBE latest by **June 15, 2018**.
- In case a candidate wishes to apply in more than one discipline then separate application must be filled for each discipline.
- **Selection procedure:** The selection procedure would be an interview (in-person or over video conference) for the shortlisted applicants. Statement of purpose (SOP) and recommendations of the two referees must be submitted by the candidate before his/her interview.
- **Common Application Portal (COP):** International applicants may refer to the web link <https://intapp.iitb.ac.in/> for admission in PhD Programs.

## **Minimum Educational Qualification and Qualifying Examination**

### **For Indian Students**

- Minimum first class\* Master degree in Life Sciences, Microbiology, Biotechnology, Bioinformatics, Physics, Biophysics, Chemistry, Biochemistry, Biomedical Science, Mathematics, System Biology with a **valid GATE qualification or UGC/CSIR-JRF qualification or equivalent fellowship** OR
- Minimum first class\* M. Tech degree in Computer Science and Engineering/ Electrical/ Electronics/ Mechanical/ Biomedical/ Chemical/ Biotechnology/ Signal Processing OR
- Minimum first class\* Bachelor degree in Computer Science and Engineering/ Electrical/ Electronics/ Mechanical/ Biomedical/ Chemical/ Biotechnology/ Signal Processing with a **valid GATE qualification or UGC/CSIR-JRF qualification or equivalent fellowship** OR
- B. Tech. degree from an Indian Institute of Technology (IIT) with a minimum CPI of 8.0.

### **For International Students**

- Minimum first class\* Master degree in the relevant discipline of the Engineering /Technology Science with valid GRE and TOEFL (International applicants are exempted from GRE and TOEFL qualification for Autumn Semester 2018)

\*The first class is defined as

- i. 60 % marks for GEN/OBC (55% for SC/ST) category in aggregate or as specified by the university/institute, **OR**
- ii. CPI/CGPA of 6.0 for GEN/OBC (5.5 for SC/ST) category on the scale of 10 with corresponding proportional requirements when the scales are other than on 10 (for example 4.8 for GEN/OBC category (4.4 for SC/ST) on a scale of 8), **OR**
- iii. A first class as specified by the University/Institute awarding the degree.

## Research Facilities:

### ✚ Sophisticated Instruments

- Confocal Microscope
- Proteomics Facility
- Reverse Phase HPLC, Chiral HPLC
- Real Time PCR
- FACS Sorter (BD FACS ArisIII-4 laser)
- FACS Analyzer (BD LSR Fortress 5 laser)

### ✚ Characterization Facilities

- NMR, Avance III 400 MHz
- AFM, AIST-NT, Smart SPM
- FE-SEM, Supra55 Zeiss
- Iso Electric Focusing
- Plate Reader
- Single Crystal XRD
- UV-Visible Spectrometer
- Photo-luminescence Spectroscopy
- Circular Dichroism, J-815 JASCO
- Q-TOF LC-MS, Bruker Daltonik
- GC-MS QP 2010, Shimadzu

For details please visit our [Sophisticated Instrumentation Centre \(SIC\) webpage](#).

**Research areas of faculty members:** For more details, visit faculty profiles at <http://bsbe.iiti.ac.in/faculty.php>

Faculty	
<b>Dr. Mirza Saqib Baig</b>	Innate immunity & Inflammation, Macrophage Biology, Transcriptional Regulation, Signal Transduction For information visit: <a href="http://msb415.wixsite.com/mirzalab">http://msb415.wixsite.com/mirzalab</a>
<b>Dr. Parimal Kar</b>	Computational Biophysics, MD simulations of Biological Molecules, Molecular Recognition, Computational Structural Glycobiology For information visit: <a href="https://iitibsbeparimalkar.wixsite.com/biophysics">https://iitibsbeparimalkar.wixsite.com/biophysics</a>
<b>Dr. Hem Chandra Jha</b>	Host-Pathogens interaction, Pathogens burden, Biomarkers, Cancer Biology For information visit: <a href="http://iitibsbbe.wixsite.com/hemcjha">http://iitibsbbe.wixsite.com/hemcjha</a>
<b>Dr. Sushabhan Sadhukhan</b>	Chemical Biology, Cancer Cell Metabolism, Metabolomics, Proteomics and Bio-orthogonal Probe Development For more information visit: <a href="https://sushabhan.wixsite.com/iitibsbbe">https://sushabhan.wixsite.com/iitibsbbe</a>
<b>Dr. Abhijeet Joshi</b>	Biosensors, Biomaterials, Drug Delivery, Diagnostics, Theranostics For information visit: <a href="http://abhijeetniper.wixsite.com/therasens-lab">http://abhijeetniper.wixsite.com/therasens-lab</a>

## Address for Correspondence:

**Dr. Kiran Bala** (DPGC Convener),  
Discipline of Biosciences and Biomedical Engineering  
Indian Institute of Technology Indore  
Khandwa Road, Simrol  
Indore 453552, Madhya Pradesh, India.  
Email: [dpgcbsbe@iiti.ac.in](mailto:dpgcbsbe@iiti.ac.in)